

G.R.BOND Double U Shear Mounting manufactured in four different sizes such as GR-211 TO GR214

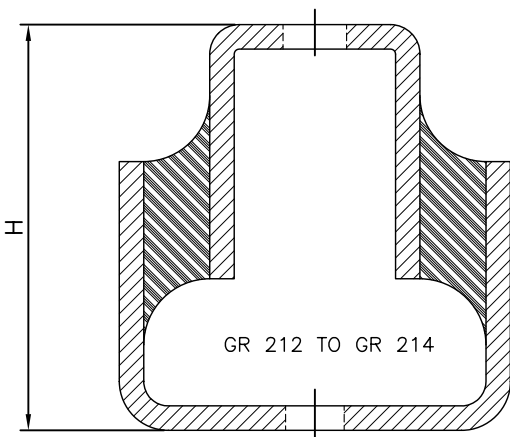
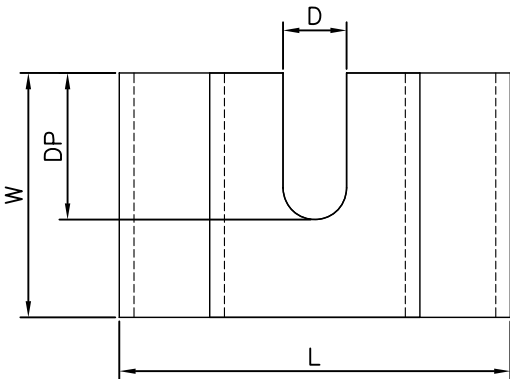
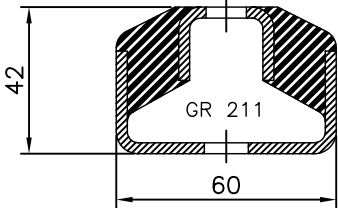
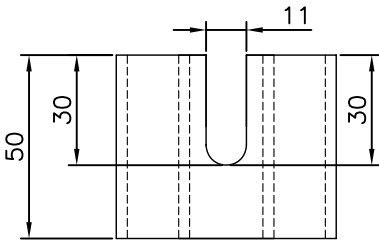
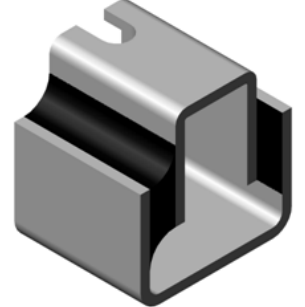
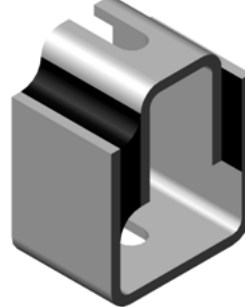
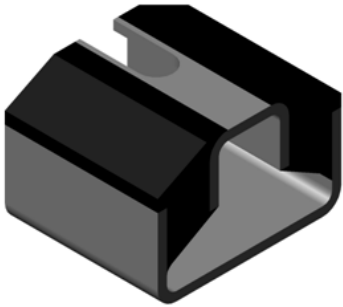
G.R.BOND Double U Shear mounts are soft in nature & it has a spring action. Double U Shear mounts are capable of absorbing shock & vibrations in the vertical as well as lateral direction. The designs incorporates against metal to metal bonding. A wider base provide stability in the installed equipment. Double U Shear Mounting can be prepared as pre-compressed. Double U Shear mountings are used for instruments, electronics apparatus protecting to equipment in packing cases, suspending light components, recorders, equipment's, electronics apparatus protecting to equipment in packing cases, suspending light components, recorders in vibrating equipment's, electrically controlled panels, suspending ducts pipe lines & high speed motors for hydraulic power packs, buffers etc.

GR-211

GR-212

GR-213

GR-214



TYPE	DIMENSION (MM) U-SHEAR MOUNT GR-211 To 214				
	H	L	W	D	DP
GR 212	65	70	25	11	18
GR 213	83	80	50	13	30
GR 214	115	90	63	16	40

PART NO.	COLOUR CODE	MAX. LOAD CAPACITY (kg)	DEFLECTION (mm)
GR-211-1	WHITE	18	3
GR-211-2	GREEN	25	3
GR-211-3	YELLOW	50	3
GR-212-1	WHITE	15	7
GR-212-2	GREEN	23	6
GR-212-3	YELLOW	25	4
GR-213-1	WHITE	70	7
GR-213-2	GREEN	90	6.5
GR-213-3	YELLOW	96	4
GR-214-1	WHITE	150	7
GR-214-2	GREEN	165	5
GR-214-3	YELLOW	200	4